

RECEIVED
NOV 02 2017

Not approved
at PC on 10/18/17
will go to
Council on
11/6/17
Modified &
approved at
Council level
Colder Pub

PROPOSED PUD LOTS

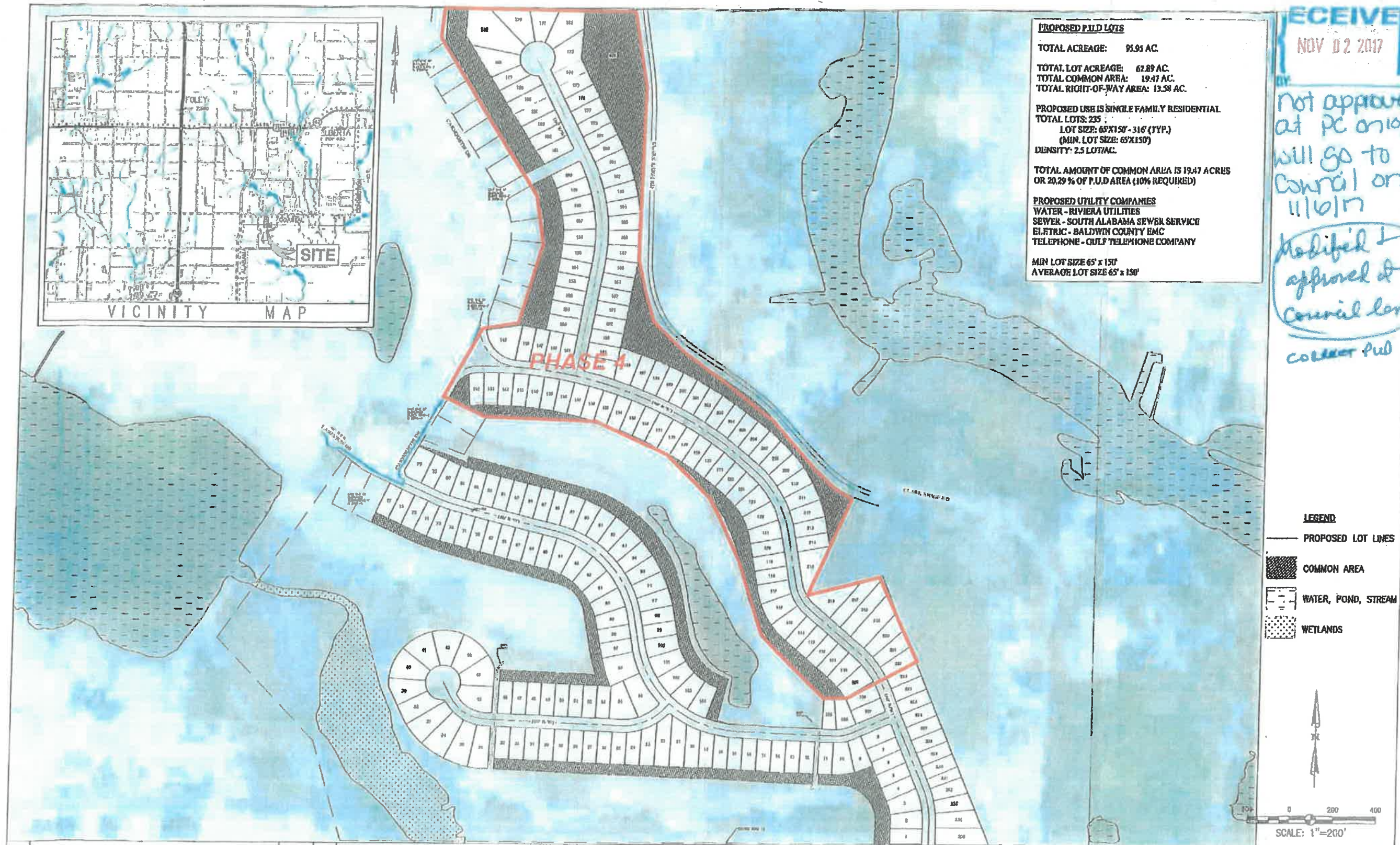
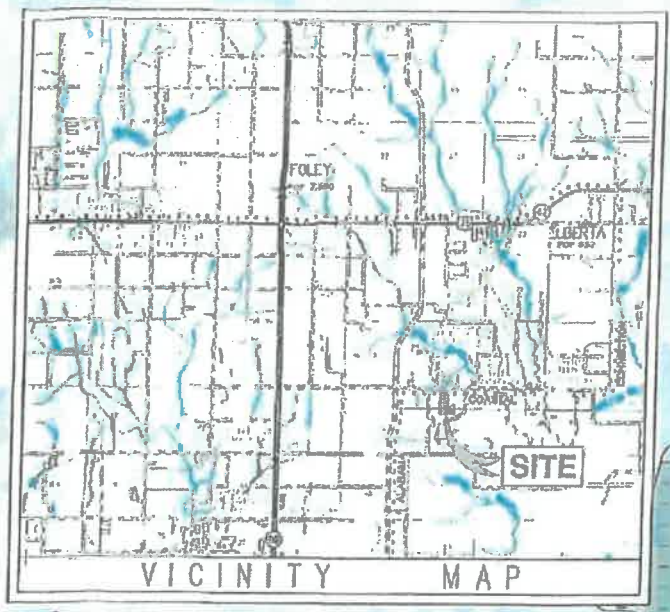
TOTAL ACREAGE: 95.95 AC.
TOTAL LOT ACREAGE: 62.89 AC.
TOTAL COMMON AREA: 19.47 AC.
TOTAL RIGHT-OF-WAY AREA: 13.58 AC.

PROPOSED USE IS SINGLE FAMILY RESIDENTIAL
TOTAL LOTS: 235
LOT SIZE: 65'X150' - 316' (TYP.)
(MIN. LOT SIZE: 65'X150')
DENSITY: 2.5 LOT/AC.

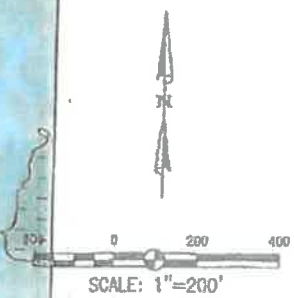
TOTAL AMOUNT OF COMMON AREA IS 19.47 ACRES
OR 20.29 % OF P.U.D AREA (10% REQUIRED)

PROPOSED UTILITY COMPANIES
WATER - RIVIERA UTILITIES
SEWER - SOUTH ALABAMA SEWER SERVICE
ELECTRIC - BALDWIN COUNTY EMC
TELEPHONE - GULF TELEPHONE COMPANY

MIN LOT SIZE 65' x 150'
AVERAGE LOT SIZE 65' x 150'



- LEGEND**
- PROPOSED LOT LINES
 - COMMON AREA
 - WATER, POND, STREAM
 - WETLANDS



HUTCHINSON, MOORE & RAUCH, LLC
1 ST. LOUIS STREET, SUITE 1001
MOBILE, ALABAMA 36602
ENGINEERS & SURVEYORS
LAND PLANNERS
TEL (251) 345-1841
FAX (251) 345-1843
mobile@hmrengineers.com

GLENLAKES EAST - PUD MODIFICATION
PRELIMINARY LOT LAYOUT
ELLIOTT HOMES

SCALE	DATE	DRAWN BY	CHECKED BY	SHEET
1"=200'	AUGUST 2017	CEV	TSS	1 OF 1

12/16/2017
RECEIVED